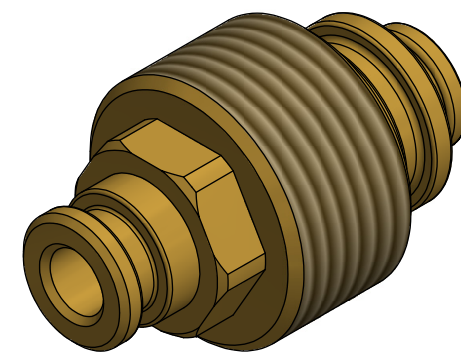
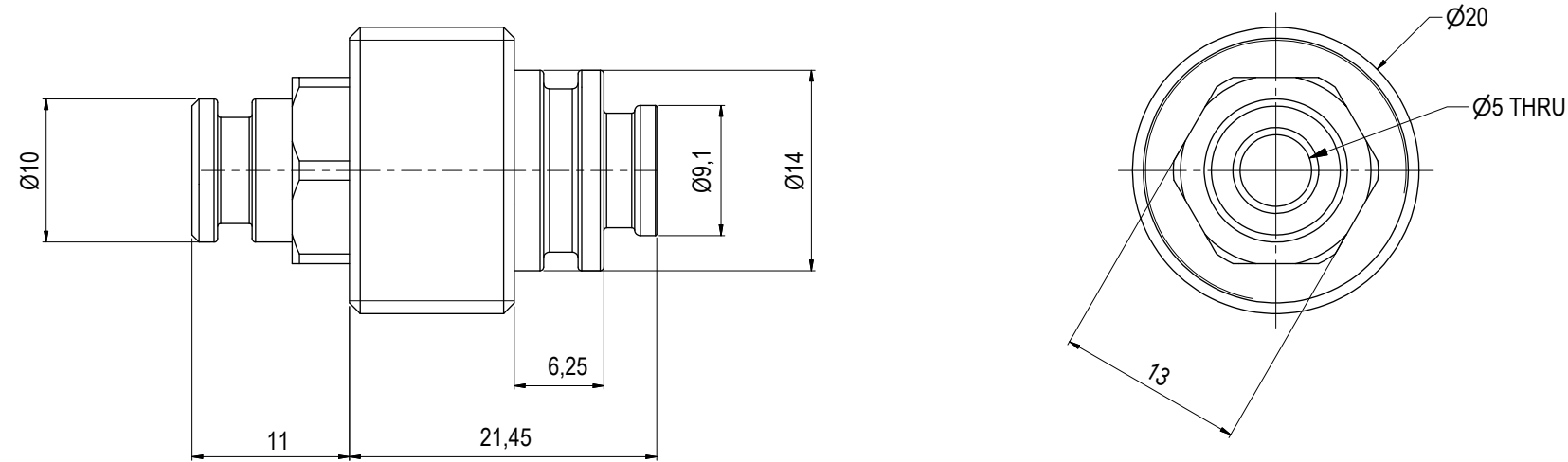


NOTE: 1
 DESIGN CODE:
 N/A

NOTE: 2
 TECHNICAL CLASSIFICATION:
 Article Type: 003-Valve Stabs
 Main Group: 3.00. Misc-Valvestab
 Intermediate Group: 3.40.09. Spares
 Sub Group: 3.40.94.2. Receptacle

NOTE: 3
 INTERFACE INFORMATION:
 Pressure Rating Bar: N/A
 Material: UNSC63200 (OM7)
 Weight: 0 kg
 Volume: 0,01 dm³
 Surface Area: 26 cm²
 Hydraulic: N/A
 Mechanical: N/A
 Electrical: N/A
 Com. & Protocol: N/A



08	9.3.2026	7-IFC (Issued for Construction)		HNJ	TAN	HNJ
07	29.5.2024	7-IFC (Issued for Construction)	added tolerances and notes	WTJ	HNJ	WTJ
06	23.5.2016	7-IFC (Issued for Construction)		WTJ	LGH	WTJ
05	3.2.2012	7-IFC (Issued for Construction)		LGH	N/A	N/A
Rev.	Date	Reason for issue	Revision change	Made	Chk'd	Appr.

BLUE LOGIC

This Drawing is the Property of Blue Logic AS © and must Not be Loaned, Reproduced or Transferred to others without written Permission

Unless Noted Otherwise:	Dwg Scale: NTS
Dim. Tol: NS-ISO 2768-1N/A	Dwg Proj:
Roughness: RaN/A	Dwg Format: A3
Fillet Rad: Corner Rmax: N/A	Break Edges: (R. Alt. 45°) R= 0,1-0,5

Drawing title: Cartridge for Ø55 Rec For Flushing	Drawing number: BA1929	Rev: 08
---	------------------------	---------